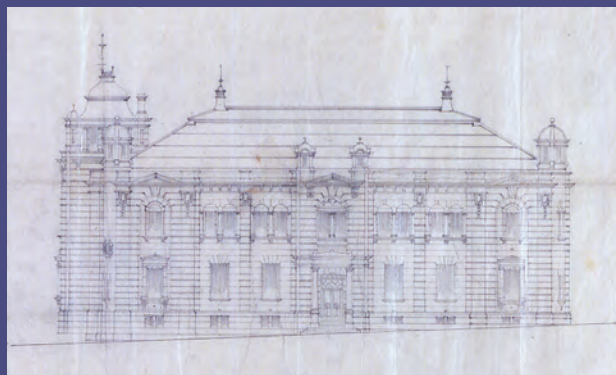


The Bank of Japan Otaru Museum opened in May 2003, making use of the former Bank of Japan Otaru Branch building. The building is a fine example of the work of Kingo Tatsuno, a pioneer of Western-style architecture in Japan.

The old Otaru Branch building with its atmosphere of history provides an appropriate setting for displays explaining the history of the Bank of Japan, its operations, and the financial system in a readily understandable manner.

We hope that through this exhibition, you will learn about the role of the Bank of Japan and deepen your understanding of the intimate connection between the economy and our daily life.

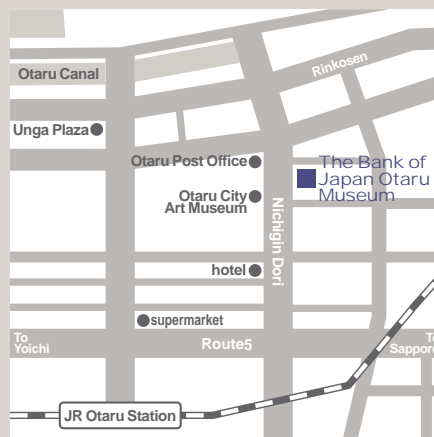


The Otaru Branch building was completed in July 1912. It was designed by Kingo Tatsuno, well known as the architect of the old redbrick Tokyo Station, and Uheiji Nagano. The outside of the building is in a Renaissance style, with five small domes. The brick exterior has a mortar rendering to give the impression of stone.

Stamp your leaflet as a souvenir of your visit

Information

- Address | The Bank of Japan Otaru Museum
1-11-16 Ironai, Otaru, Hokkaido 047-0031, Japan
- Opening hours | April-November 9:30 to 17:00 (Last admission at 16:30)
December-March 10:00 to 17:00 (Last admission at 16:30)
- Closed | Wednesdays (Open on holiday Wednesdays)
December 29 through January 5
*The museum may also be closed temporarily for maintenance or renewing exhibits.
- Admission | Free
- Phone | +81-134-21-1111 (in Japanese only)
- URL | <https://www3.boj.or.jp/otaru-m/>



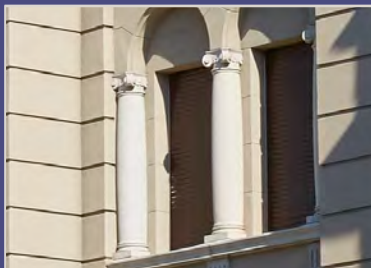
ENGLISH

日本銀行旧小樽支店
金融資料館
The Bank of Japan Otaru Museum



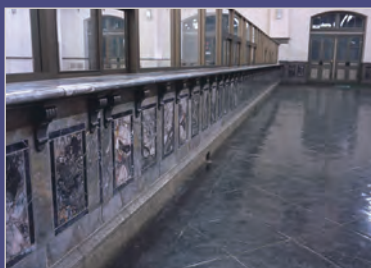
Window decoration, granite from Okayama

The window surrounds are made of granite produced on Kitagi Island, Okayama; the column capitals of the window decorations on the second floor are Ionic.



The banking hall counter

Marble from Akasaka in Gifu Prefecture was used for the area around the lobby including the banking hall counter which was used by tellers in its Otaru Branch days.



The ceiling of the banking hall

The high (10.5m) ceiling of the banking hall would have been impressive for Japanese people in the early 20th century. The roof is supported by steel frames resting on brick walls. This method of construction makes it possible to have a large space free of pillars.



Banknote Issuance: Behind the Scenes

The Bank of Japan is the sole issuer of banknotes in Japan. This display presents the life of a banknote and introduces various anti-counterfeiting techniques.



Price Stability: Behind the Scenes Financial System Stability: Behind the Scenes

This display explains the basics of the monetary policy and the financial system clearly and simply.



The Vault of the Bank

See the old vault just as it was on a working day.

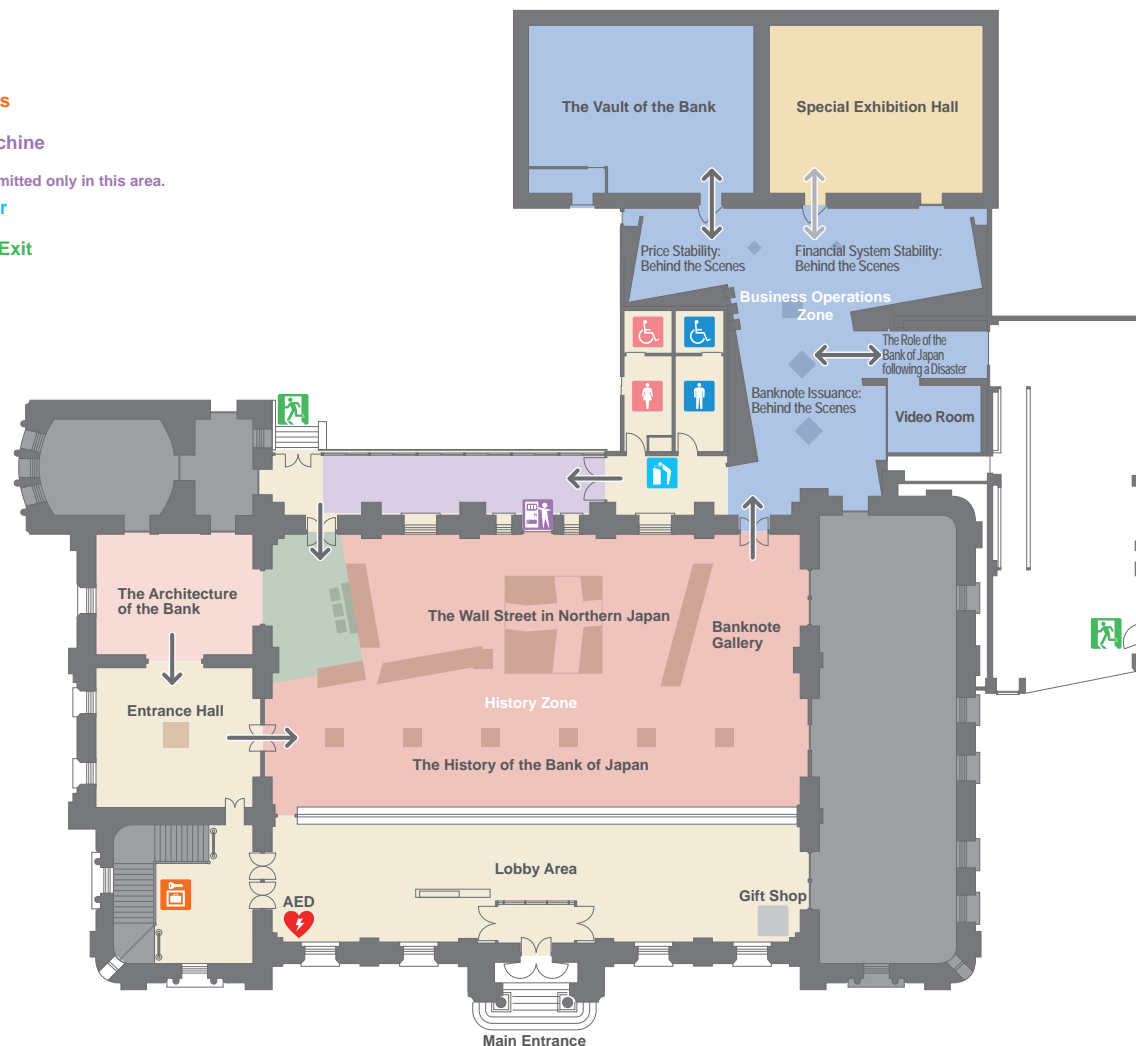
Coin Lockers

Vending Machine

Drinking is permitted only in this area.

Water Cooler

Emergency Exit



The Architecture of the Bank

This section explains the structure of the original Otaru Branch building and introduces the works of Uheiji Nagano, who, under Kingo Tatsuno's supervision, took on responsibility for designing the building.



The History of the Bank of Japan

This display introduces the role of the Bank of Japan in the history of the Japanese economy from its establishment in 1882 up to the present day.



The Wall Street in Northern Japan

Step back to the early 20th century and see Northern Japan's Wall Street. This display explains the role of the former Otaru Branch played as the financial center of northern Japan.



Banknote Gallery

A collection of Bank of Japan notes issued after World War II is exhibited.